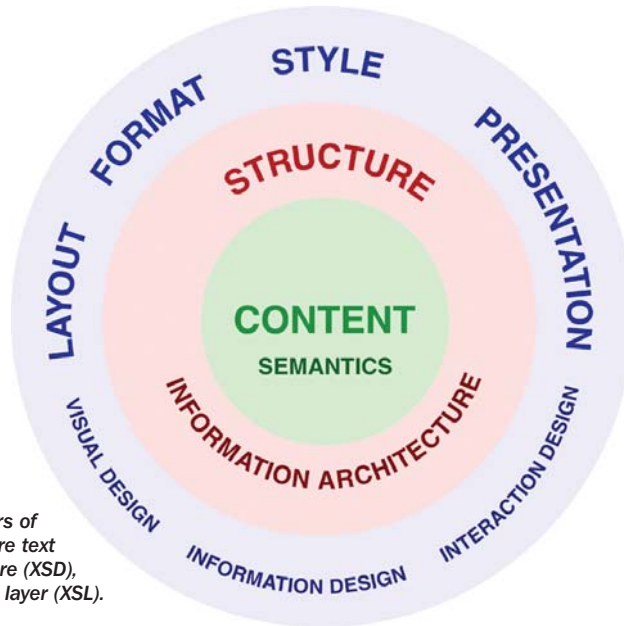


Images from  
**Let's Take  
 Today's XML  
 Content-  
 Creation  
 Tools for a  
 Spin**

By Bob Doyle

EContent magazine, June 2006



The three layers of content: the core text (XML), the structure (XSD), and the style layer (XSL).

concept id="concept\_4504680C596A44E682287D4B1BE8A288"

title **Intent** title

shortdesc Use a Design Pattern and DITA XML to report CM Professionals Best Practices. shortdesc

conbody

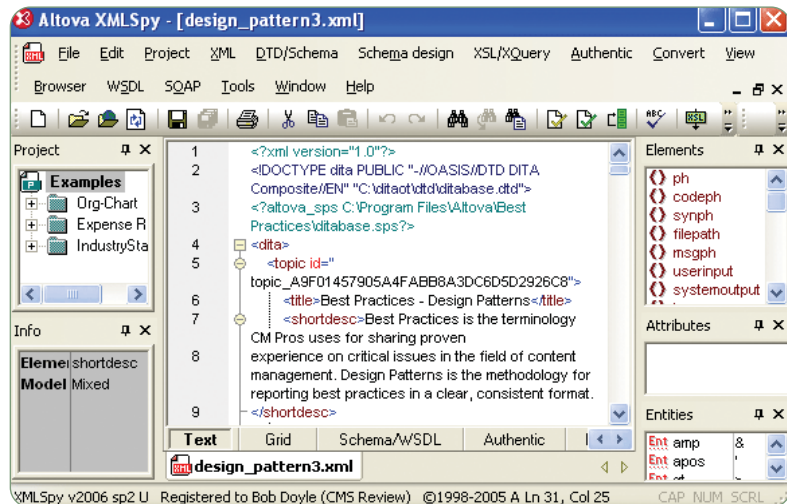
p Make design patterns that communicate the practice technique show clearly where this practice fits in the

p The cursor changes when drop is valid to look like this...

conbody shortdesc Use a Design P

concept If Arbortext can fix it to validate it looks like this...

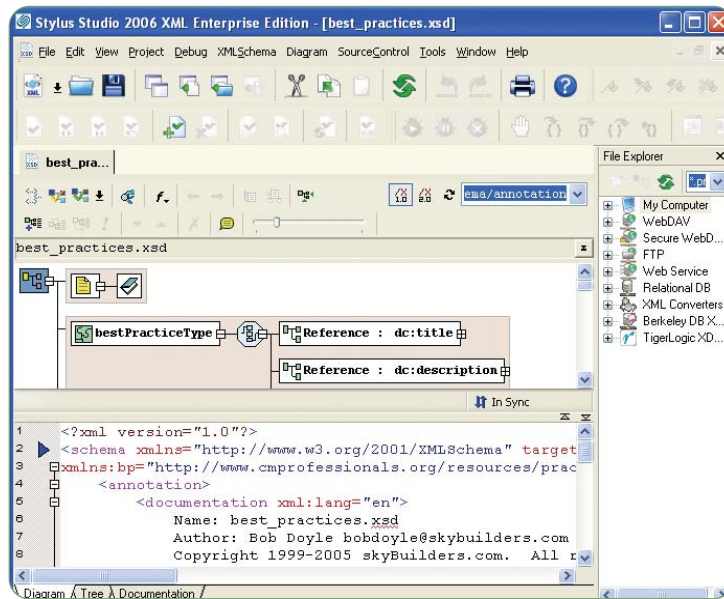
In Arbortext Editor we have selected a short description element in our DITA document and are dragging it. The red "stop/no parking" symbol indicates shortdesc is not allowed inside the paragraph element.



Altova's Source Code view can switch to a Grid/Structure view, plus WYSIWYG (Authentic) view and a Browser view.

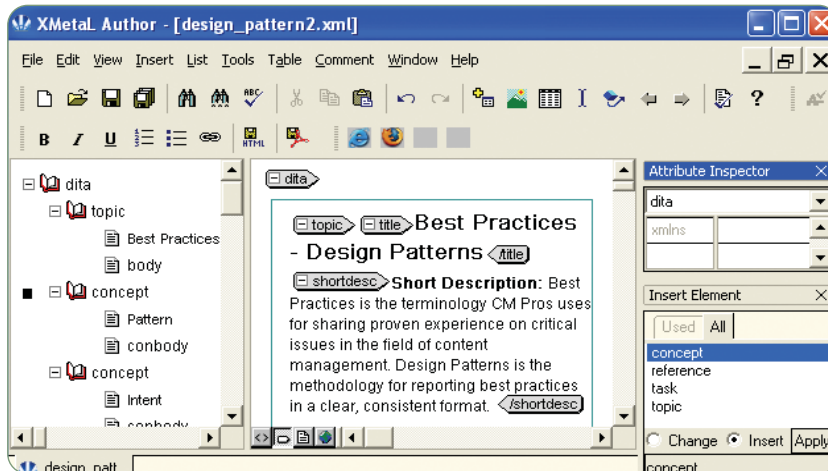
## Images from Let's Take Today's XML Content- Creation Tools for a Spin

The Visual Design view is synchronized with the Source Code view.



By Bob Doyle

EContent magazine, June 2006



The XMetal Tags-on view shows a simultaneous Tree/Structure view on the left, and Elements/Attribute panes on the right.

XPath 2.0: here we are importing the Dublin Core schema.

